

FlexiWash FW400

A highly flexible, time-saving instrument to get better Western results.



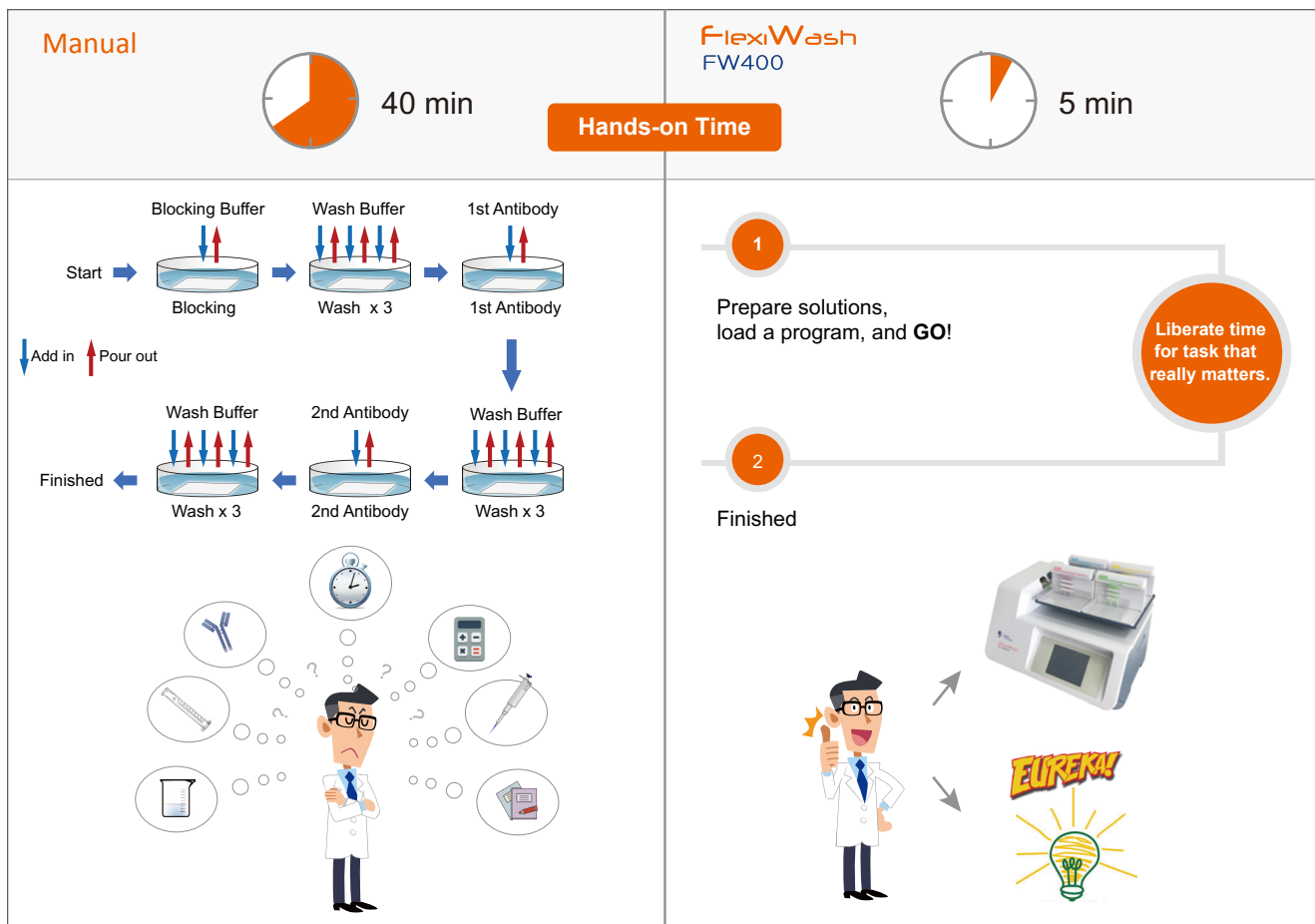
FlexiWash FW400

The FlexiWash FW400 Automatic Membrane/Gel Wash Station is designed for automated Western blot membrane wash and incubation process. After proteins are transferred onto a membrane, the membrane is loaded onto FlexiWash for automated blocking, incubation, and wash cycles. The user only needs to prepare required reagents, initiate a blotting program and let the FW400 do the rests. With the unique liquid-handling design, the FW400 supports four wash/incubation processes simultaneously, each of which can be independently programmed and fully automated for specific applications.

FW400 can also be used in protein or DNA gel staining and destaining, or any other applications that involve repetitive liquid handling and incubation cycles.

Saving Time and Cost

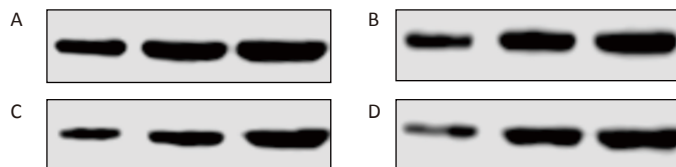
- Load-and-go automated membrane wash and incubation process.
- Reduce hands-on operation time to several minutes. No more Western blot babysitting.
- Automatically recover precious reagents (i.e. primary antibodies) for repeat use.



FlexiWash reduces hands-on time from 40 min to 5 min.

Improving Western Blot Process

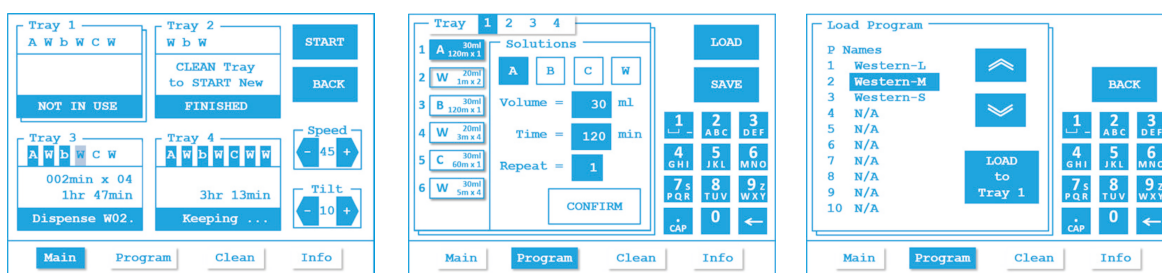
- **Better reproducibility:** variations on time and volume control are eliminated to ensure consistency.
- **Systematic protocol optimization:** side-by-side comparing four Western conditions with different antibody dilutions, incubation time, or buffer contents.



Western results of CDK4 (33 kD) using FlexiWash FW400. (Sample: Hela cell lysate).

Highly Flexible

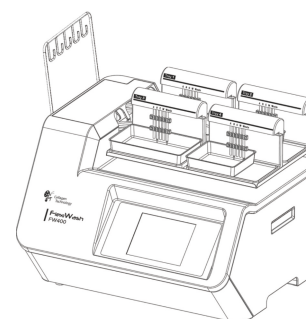
- User-friendly interface: large LCD touch screen to display machine status and to select or modify programs.
- One program contains up to 7 wash/incubation steps.
- Each step is programmed to control source and volume of reagent to be used, incubation time, and repeat Cycle number.
- Three different sized trays to accommodate different gel and membrane sizes.



FlexiWash FW400 operation interface.

FlexiWash FW400 Specification

Weight	50 lb (23 kg)
Dimension	19 in × 21 in × 18 in (47 cm × 53 cm × 46 cm) (H × W × D)
Input Voltage	100 ~ 240 V
Max Power	150 VA
Standby Power	8 VA
Solution Volume	1 ~ 99 mL
Incubation Time	1 ~ 999 min
Solution Choice	Up to 4 solutions for each tray
Program Steps	Up to 7 steps



Ordering Information

Catalog Number	Product Name	Size
FW400	FlexiWash FW400 Automatic Membrane/Gel Wash Station	1 set
S4001-40	FlexiWash Tray-L	40 trays
S4002-40	FlexiWash Tray-M	40 trays
S4003-40	FlexiWash Tray-S	40 trays
S4050-500	10× Deep Clean Solution	500 mL

Contact Us



9235 Activity Rd, STE101-102, San Diego, CA 92126, USA

Phone: +1.888.696.8666

Support: technical@cellagentech.com

Sales: sales@cellagentech.com

Cellagen Technology



For more information, please visit www.flexiwash.com or www.cellagentech.com/flexiwash

Cellagen_Technology