



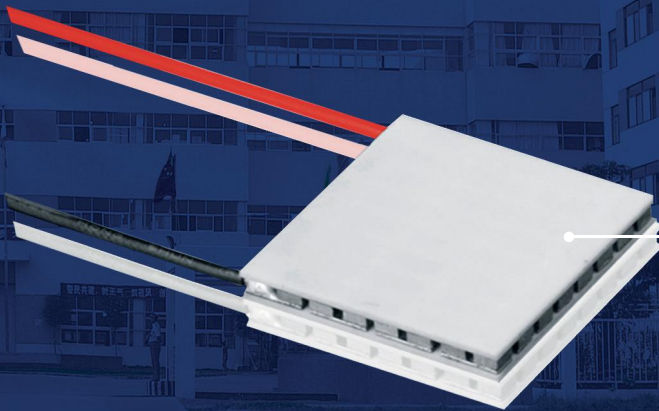
ONE OF THE FASTEST-GROWING TECH  
COMPANIES IN THERMOELECTRIC INDUSTRY

For Any Technical Questions, Please Contact at [info@nodesus.com](mailto:info@nodesus.com)



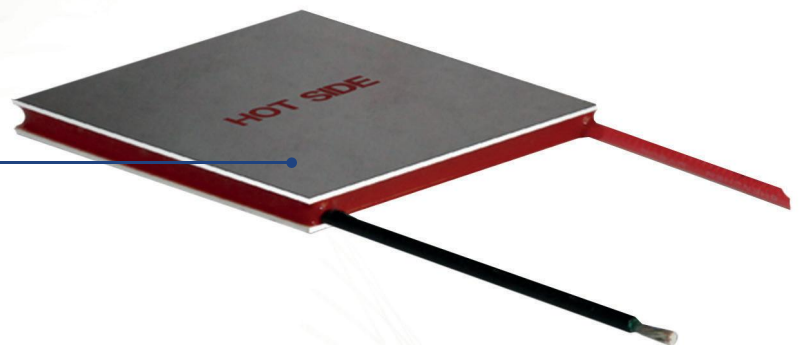
# PRODUCTS

Fuxin designs and manufactures thermoelectric coolers, thermoelectric generators for multiple industries.

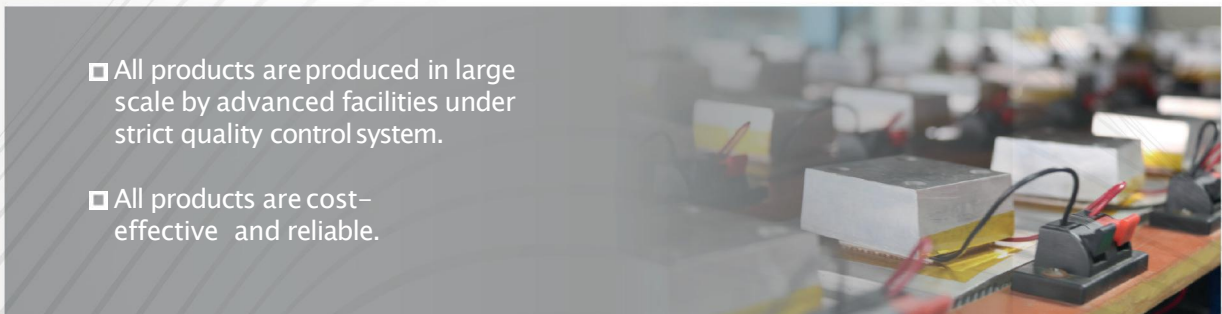


**TEC**  
Thermoelectric Cooler

**TEG**  
Thermoelectric Generator



- ❑ All products are produced in large scale by advanced facilities under strict quality control system.
- ❑ All products are cost-effective and reliable.

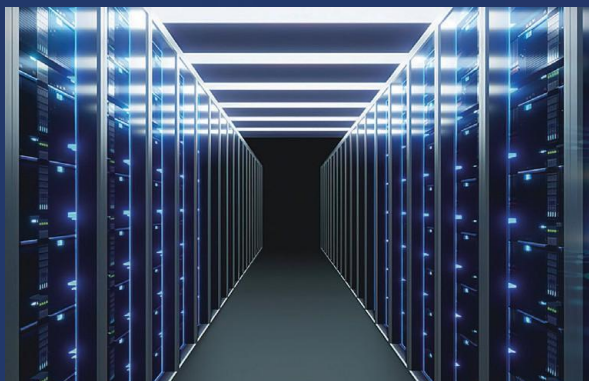




# APPLICATIONS



Photonics



Telecom



Medical / Analytical



Industrial / Commercial



Consumer Products



Automotive

# THERMOELECTRIC GENERATORS (TEGS)

The following are thermoelectric generator (Seebeck effect) models designed and manufactured by Fuxin, which convert heat flux (temperature differences) directly into electrical energy.

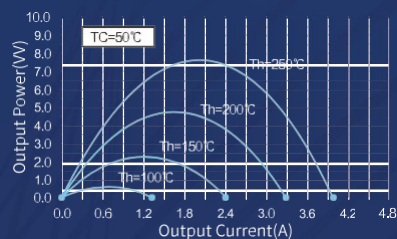
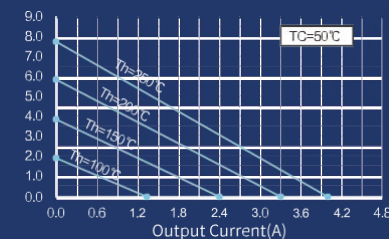
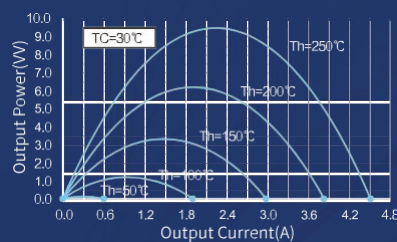
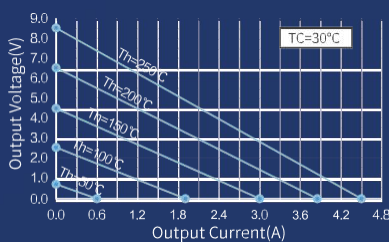
## TEG MODELS & PARAMETERS

Types	TEG1-071-1.4-1.6-250	TEG1-128-1.0-1.2-250	TEG1-127-1.4-1.6-250	TEG1-242-1.0-1.2-250	TEG1-127-1.8-2.0-250	TEG1-199-1.4-1.6-250
Hot Side Size (mmxmm)	30mm x 30mm	30mm x 30mm	40mm x 40mm	40mm x 40mm	50mm x 50mm	50mm x 50mm
Cold Side Size (mmxmm)	30mm x 30mm	34mm x 30mm	40mm x 40mm	44mm x 40mm	50mm x 50mm	50mm x 50mm
Height (mm)	3.8	3.4	3.8	3.4	4.2	3.8
AC Resistance ( $\Omega$ 25°C)	0.6	1.6	1.0	3.0	0.8	1.6

## Electrical Output Characteristics

Hot Side Temperature (°C)	250	250	250	250	250	250
Cold Side Temperature (°C)	30 50	30 50	30 50	30 50	30 50	30 50
Open Circuit Voltage (V)	4.6 4.2	8.1 7.5	8.2 7.5	15.2 14.0	8.2 7.6	12.8 11.7
Dynamic Resistance ( $\Phi$ )	1.1 11	2.9 3.0	19 2.0	5.4 5.6	1.4 1.4	2.9 3.0
Maximum Output Power (W)	5.0 4.1	5.7 4.7	9.0 7.3	10.6 8.7	12.1 10.0	14.0 11.3
Conversion Efficiency (%)	5.6 4.9	5.5 4.8	5.6 4.9	5.5 4.8	5.7 5.0	5.6 4.9

## Performance Curve



*Please contact us if you could not find the model suitable for your application from the above.*