

MP-32+/16 Mini Gradient Thermal Cycler

Thermal Cycler

Introduction

Mini Thermal Cycler is an ultra-light and ultra-thin thermal cycle gene amplification instrument. Widely used in molecular biology, criminal investigation, disease research and other fields. Mini portable for car use.

Features

1. New and unique appearance, the interface operation is simple and convenient, ultra-light ultra-thin.
2. Hot lid can be switched on and off, and test tube temperature control mode and module temperature control mode can be choose to meet more different experimental requirements.
3. MP-16 mini PCR can be used in vehicles
4. Can be quickly upgraded via U disk, convenient for instrument software update.



MP-32+



MP-16

Software function introduction



Gradient interface(MP-32+)
System built-in gradient



Running interface(MP-32+)
Real-time display of gradient distribution and real-time temperature display

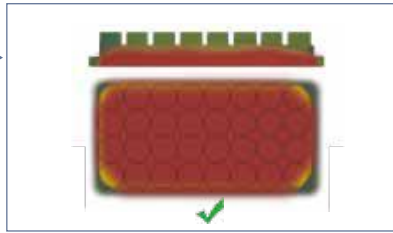
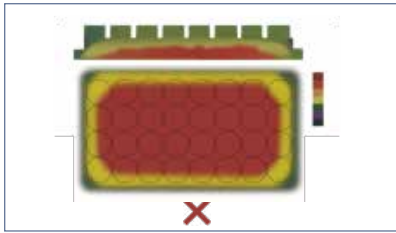


Setting interface
Hot lid temperature and working mode of hot lid can be set



User interface
(more than 100 files can be stored)
Multi-user independent detection and independent management

Details



The latest generation of semiconductor technology, excellent augmentation performance, effectively eliminate the edge effect of module heat conduction, the module temperature uniformity is excellent. Built-in multiple refrigeration film, multiple sensors are evenly distributed, the program temperature control is more precise.

The bottom case is made of one-piece aluminum, which is not only beautiful and sturdy, but also has a higher heat dissipation performance.



The ingenious elastic hot-cover structure design adapts the test tubes of different heights to ensure the best conditions for the experiment.



5-inch TFT high-definition full-touch color screen, can quickly edit the required files, visual display of temperature curve, convenient and fast setting

Parameters

Model	MP-32+	MP-16
Single step time range	1~59m59s(0 is forever)	1~59m59s(0 is forever)
Temp. range	4~99.9°C	4~99.9°C
Sample capacity	32x0.2ml	16x0.2ml
Max. heating rate	6°C/s	5°C/s
Max. cooling rate	5°C/s	4°C/s
Temp. uniformity	±0.25°C	±0.25°C
Temp. accuracy	±0.20°C	±0.20°C
Temp. display resolution	0.1°C	0.1°C
Temp. control method	Block/Tube	Block/Tube
Gradient temp. uniformity	±0.3°C	/
Gradient temp. accuracy	±0.3°C	/
Gradient temp. range	30~99.9°C	/
Gradient temp. difference range	0.1~30°C	/
Hot cover temp. range	30~110°C	30~110°C
Max. steps of the program	30	30
Program max. cycle number	99	99
Time increment/decrement	-599~+599s	-599~+599s
Temp. increase/decrease	-9.9~+9.9°C	-9.9~+9.9°C
Program pause function	Yes	Yes
16°C Insulation	Forever	Forever
LCD	5 inch, 800x480 Pixel	5 inch, 800x480 Pixel
Program storage quantity	> 100	> 100
Communication Interface	USB 2.0	USB 2.0
Input power	24V,8A	12V 9.99A
Dimensions	W.200xD.230xH.85mm	W.200xD.230xH.85mm
Net weight	3.2kgs	3.2kg